

# TIGERS BOLEZO

E. GIT.

NACH MAURICE RAVEL, FRANK SULLIVAN & JIM PETERIK (SURVIVOR)  
MARTIN GRUB

♩ = 72

The guitar score for 'Tigers Bolezo' is written in 3/4 time with a tempo of 72 beats per minute. The key signature has one flat (B-flat). The score is divided into systems of guitar notation and chord notation.

**System 1 (Measures 1-6):**

- Measure 1: Treble clef, 3/4 time signature, key signature of one flat. Chord: C (1-2).
- Measure 2: Treble clef, 3/4 time signature, key signature of one flat. Chord: C.
- Measure 3: Treble clef, 3/4 time signature, key signature of one flat. Chord: C.
- Measure 4: Treble clef, 3/4 time signature, key signature of one flat. Chord: C.
- Measure 5: Treble clef, 3/4 time signature, key signature of one flat. Chord: A<sup>M</sup>/C.
- Measure 6: Treble clef, 3/4 time signature, key signature of one flat. Chord: G/B.

**System 2 (Measures 7-10):**

- Measure 7: Treble clef, 3/4 time signature, key signature of one flat. Chord: G/B.
- Measure 8: Treble clef, 3/4 time signature, key signature of one flat. Chord: G<sup>7</sup>/B.
- Measure 9: Treble clef, 3/4 time signature, key signature of one flat. Chord: G<sup>7</sup>/B.
- Measure 10: Treble clef, 3/4 time signature, key signature of one flat. Chord: G<sup>7</sup>/B.

**System 3 (Measures 11-13):**

- Measure 11: Treble clef, 3/4 time signature, key signature of one flat. Chord: A<sup>M</sup>/C.
- Measure 12: Treble clef, 3/4 time signature, key signature of one flat. Chord: G<sup>7</sup>/B.
- Measure 13: Treble clef, 3/4 time signature, key signature of one flat. Chord: G/B.

**System 4 (Measures 14-16):**

- Measure 14: Treble clef, 3/4 time signature, key signature of one flat. Chord: F/C.
- Measure 15: Treble clef, 3/4 time signature, key signature of one flat. Chord: F/C.
- Measure 16: Treble clef, 3/4 time signature, key signature of one flat. Chord: D<sup>M</sup>.

**System 5 (Measures 17-19):**

- Measure 17: Treble clef, 3/4 time signature, key signature of one flat. Chord: D<sup>M</sup>.
- Measure 18: Treble clef, 3/4 time signature, key signature of one flat. Chord: D<sup>M</sup>.
- Measure 19: Treble clef, 3/4 time signature, key signature of one flat. Chord: G/B.

**System 6 (Measures 20-22):**

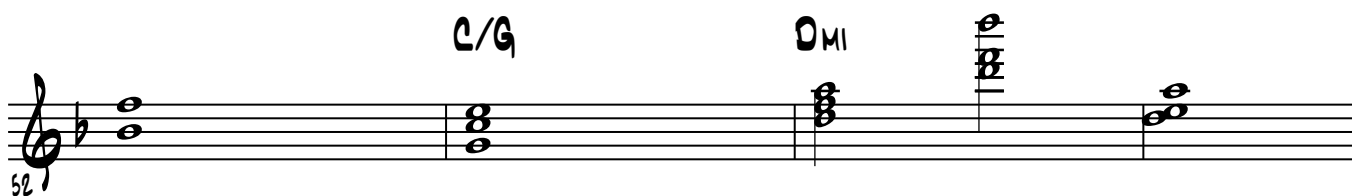
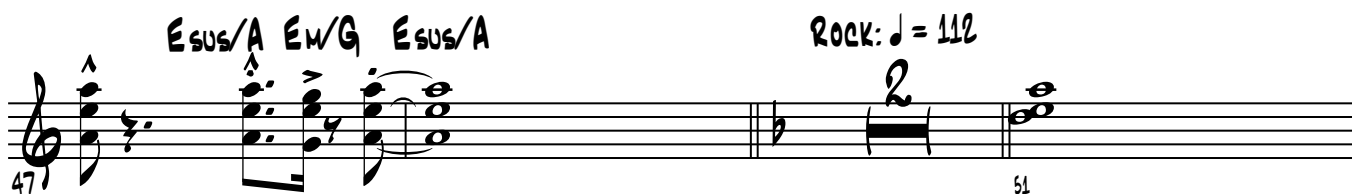
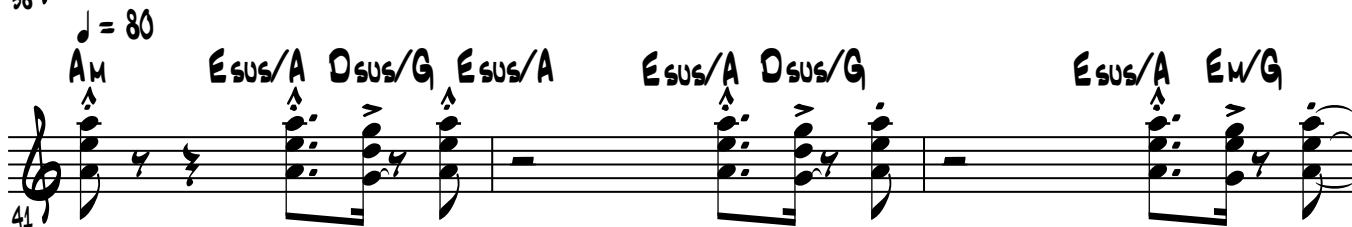
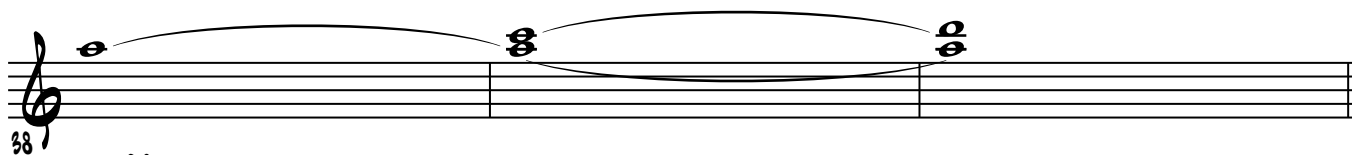
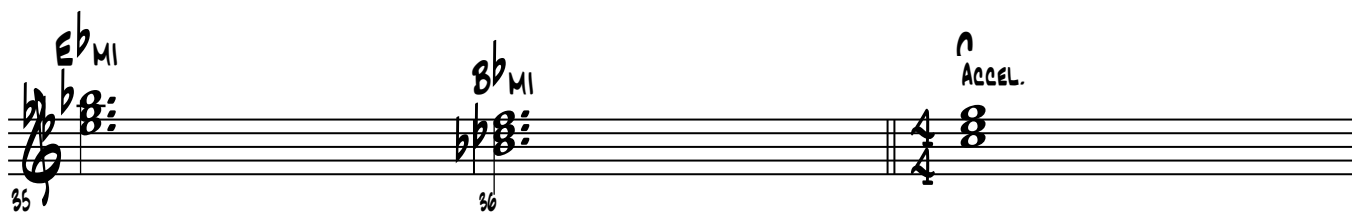
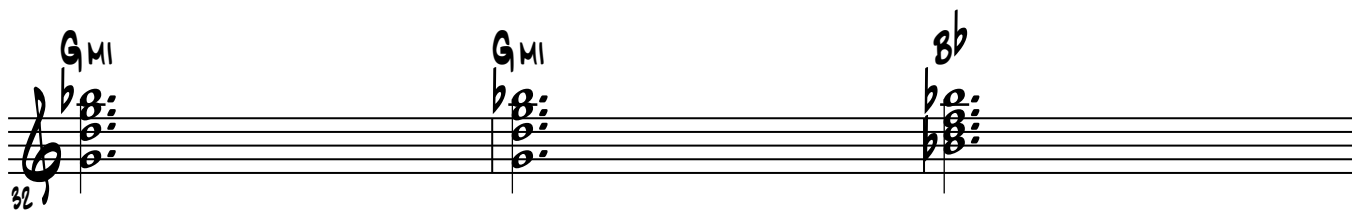
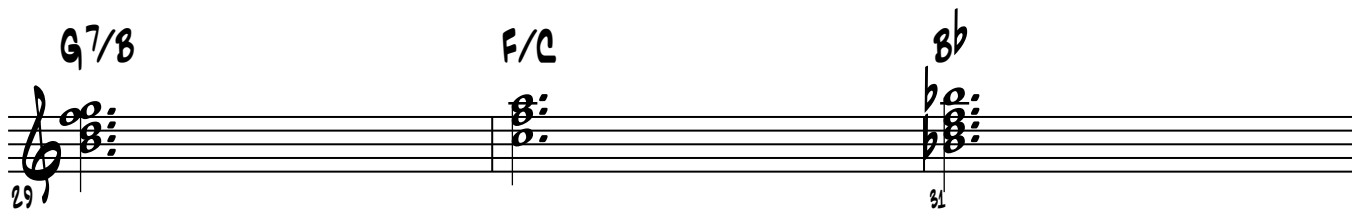
- Measure 20: Treble clef, 3/4 time signature, key signature of one flat. Chord: C.
- Measure 21: Treble clef, 3/4 time signature, key signature of one flat. Chord: B<sup>b</sup>.
- Measure 22: Treble clef, 3/4 time signature, key signature of one flat. Chord: G<sup>M</sup>.

**System 7 (Measures 23-25):**

- Measure 23: Treble clef, 3/4 time signature, key signature of one flat. Chord: G<sup>M</sup>/B<sup>b</sup>.
- Measure 24: Treble clef, 3/4 time signature, key signature of one flat. Chord: C.
- Measure 25: Treble clef, 3/4 time signature, key signature of one flat. Chord: A<sup>M</sup><sup>7</sup>/C.

2

## TIGERS BOLEZO



## 3

59

61

65 66

08 